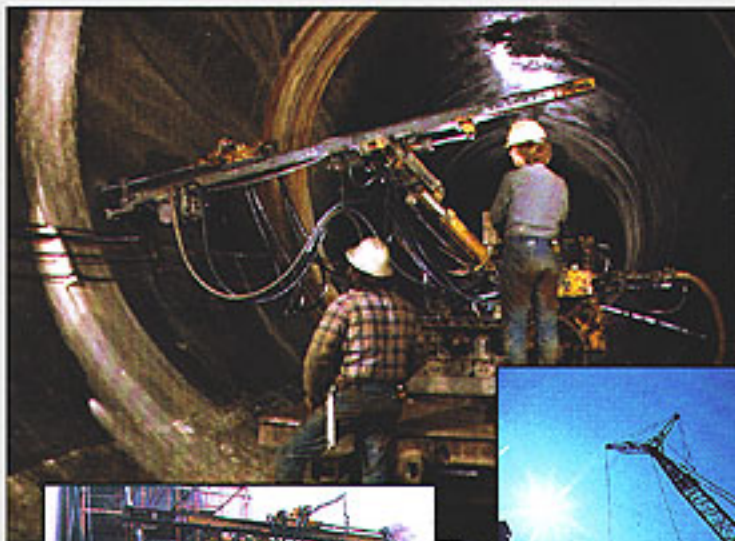


LM100A *Crawler[®] Drill*



INGERSOLL-RAND
DRILLING EQUIPMENT

The LM100A is a small class pneumatic crawler[®], capable of drilling 1 3/4 to 4 1/2 inch (44 - 114 mm) diameter holes. It can be equipped with either of two drifters or a BRH rotary head for downhole drilling. The LM100A is ideal for applications in confined areas where hand-held tools are not enough, and is light enough to transport by helicopter. Like all Ingersoll-Rand crawler[®] drills, the LM100A is "Abuse Resistant"... It keeps coming back for more!



General Specifications

| | | U.S. | Metric |
|---|-----------|----------|--------|
| Guide | | | |
| Guide Dump (without pin change) | degrees | 75 | - |
| Guide Swing (L/R) | degrees | 45/45 | - |
| Guide Extension | in-mm | 29 | 750 |
| Drill Rod Length | ft-m | 10 | 3 |
| Feed Motor Pull* | lb-kg | 3000 | 1360 |
| Boom | | | |
| Boom Swing (L/R) | degrees | 30/35 | - |
| Boom Lift (up/down) | degrees | 45/30 | - |
| Coverage Length-vert. holes (L/R) | in-mm | 107 | 2720 |
| Max. drill height (horiz.) | in-mm | 99 | 2510 |
| Carrier | | | |
| Overall Track Length | in-mm | 72 | 1845 |
| Ground Clearance | in-mm | 9 | 230 |
| Oscillation | degrees | 20 | - |
| Air motors (each)* | hp | 4.5 | - |
| Gradeability | degrees | 30 | - |
| Tromming Speed | mph-km/hr | 0-2 | 0-3.2 |
| Operating Dimensions | | | |
| Length (boom at 45 degrees, guide horiz.) | in-mm | 195 | 4950 |
| Width | in-mm | 75 | 1905 |
| Minimum Height | in-mm | 44 | 1120 |
| Height (boom at 45 degrees, guide vert.) | in-mm | 188 | 4775 |
| Weight (less drifter) | lbs.-kg | 5400 | 2450 |
| Hole Size | in.-mm | 1.75-4.5 | 44-114 |
| * at air pressure 100 PSI (7 kg/cm ²) | | | |

Drifter Options- The LM100A has a choice of two drifters, adding to its versatility. The Ingersoll-Rand YD90 drifter is capable of drilling holes from 1 3/4 - 2 1/2" (44 - 64 mm), or for more demanding applications, the powerful VL120 will drill holes from 2 - 3 1/2" (51 - 89 mm).

DHD Option- The LM100A may be purchased with an Air Rotary Head (BRH)/Downhole Drill (DHD) combination, allowing the LM100A to drill holes from 3 1/2 - 4 1/2" (89 - 114 mm) in diameter.

Drill Controls- The LM100A drill controls are offered either on the guide or on the side of the machine, giving you the flexibility to build the rig to your specifications.

Drifter/BRH Specifications

| Drifter | model | YD90 | VL120* |
|--|----------------------------|------------------|---------------|
| Hole Range | in. (mm) | 1.75-2.5 (44-64) | 2-3.5 (51-89) |
| Weight | lb (kg) | 187 (85) | 375 (170) |
| Frequency | RPM | 1600 | 1900 |
| Air Consumption | SCFM (m ³ /min) | 375 (10.6) | 600 (17.0) |
| @ 50 RPM & 100 psi (7 kg/cm ²) | | | |
| Bore | in (mm) | 3.5 (90) | 4.75 (120) |
| Stroke | in (mm) | 3.4 (85) | 3.62 (92) |
| Rod Length (standard) | ft (mm) | 10 (3048) | 10 (3048) |

BRH Rotary Head

| | | |
|--|----------------------------|------------|
| Weight | lb (kg) | 304 (138) |
| Torque Max. | lb.ft (kg.m) | 700 (96.7) |
| Rotation Range | RPM | 0-50 |
| Air Consumption | SCFM (m ³ /min) | 120 (3.39) |
| @ 50 RPM & 100 psi (7 kg/cm ²) | | |
| Gear Ratio | | 20:1 |
| Horse Power | hp (kw) | 4.5 (3.35) |
| @ 100 psi (7 kg/cm ²) | | |

* This drifter is authorized as an alternate drifter for use with the LM100A with a special heavy duty feed chain.

Nothing contained in this brochure is intended to extend any warranty or representation, expressed or implied, regarding the products described herein. Any such warranties or other terms and conditions of sale of products shall be in accordance with Ingersoll-Rand's standard terms and conditions of sale for such products, which are available upon request.