



SPECIFICATIONS OF HCR 12 - ES SERIES

GENERAL SPECIFICATIONS

Weight	11,000 kg (24,200 lbs)
Overall length	9,450 mm (31')
Overall width	2,835 mm (9'4")
Overall height	2,730 mm (9')

DRIFTER

Model	HD612 II
Weight	243 kg (535 lbs)
Blow output	17 kW
Number of blows	2,250 - 2,500 bpm
Number of revolutions	0 - 200 rpm

TRAMMING

Length of ground contact	2,480 mm (8'2")
Oscillating angle	15 degree
Tramming speed	3 km/h (1.9 mph)
Gradeability	30 degree

DIESEL ENGINE

Model	ISUZU A-6BG1T
Rated output	126 kW (170 hp) / 2,500 rpm
Allowable operating angle	30 degree
Fuel tank capacity	275 l (72 gal)
Fuel consumption	26.6 l (7 gal) / h

HYDRAULIC SYSTEM

Variable displacement pump	Axial piston pump
Fixed displacement pump	gear pump
Oil tank capacity	200 l (53 gal)

BOOM

Model	JE326-31 extension boom
Boom length	3,330 mm (11')
Boom extension length	1,200 mm (4')

GUIDE SHELL

Model	GH831-30
Overall length	7,480 mm (24'6")
Guide swing angle	Right 30 degree, Left 90 degree
Feed length	4,520 mm (14'10")

COMPRESSOR

Model	AIR MAN PDS265
Free air delivery	7 m ³ / min. (245 cfm)
Working pressure	11 kg / cm ² (150 psi)

DUST COLLECTOR

Model	A884-130
Suction capacity	24 m ³ / min. (842 cfm)
Number of filters	4
Pre-cleaner	Standard
Suction cap	Moveable, Hydraulic

ELECTRIC SYSTEM

Source voltage / Battery	DC24V / DC12V, 80H / 20H (2 Batteries)
Lighting	24V 70W x 3

DRILL RODS

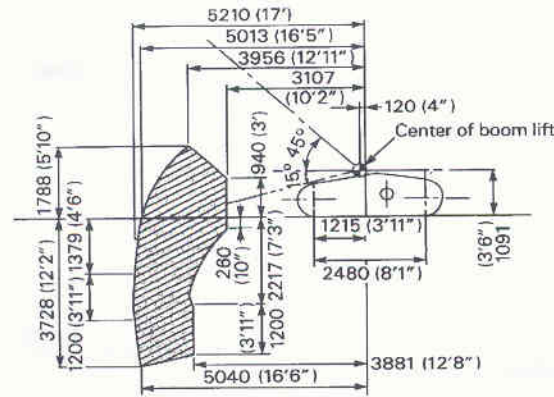
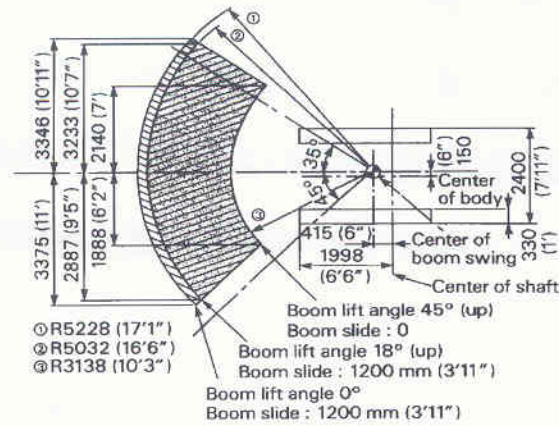
Number of rods	5 (4 in rack)
Rod length	3,050 mm (10'), 3,660 mm (12')
Thread type	T38, T45 (T51)

BIT SIZE

Thread type	T38, T45 (T51)
Bit diameter	75 - 115 mm (3" - 4.5")

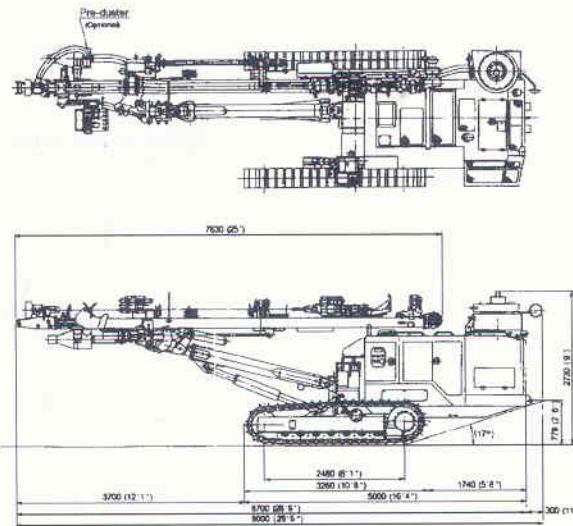
DRILLING COVERAGE

HCR12-ES



VERTICAL DRILLING COVERAGE (The Side)

DIMENSIONS



HCR12-ES

FURUKAWA ROCK DRILL

805 Lake Street, P.O. Box 807, Kent, Ohio 44240-0017
 Phone: 330-673-8419 Fax: 330-673-8504

Manufactured by FURUKAWA CO., LTD.